

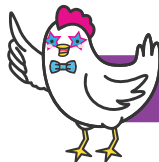
Specials Continued



Groundhog:
Drum on the table



Seal:
Clap twice



Disco Chicken
Disco dance

Additional Rules:

Wrong action. All players must complete the correct action before slapping the pile. If a player does the wrong action, they can correct it and still slap the pile. The last person to do the correct action and slap the pile takes the cards.

No peeking! Players must flip their cards outwards, so they cannot see the card before the others. If they peek at the card before playing, they must take the pile.

Pace. Players must keep an even pace. If they say the wrong word, or play out of turn, they must take the pile.

Running out of cards. If a player runs out of cards, they continue playing by saying the next word in the "Wild, Wild, Taco!" sequence. To win, the player must be the first person to slap the central pile after a match is played.

WINNING THE GAME:

The game ends when a player with no remaining cards is the **FIRST** to correctly slap a taco or a special card!

LOOKING FOR MORE FUN, FAST, AND FAMILY-FRIENDLY GAMES?

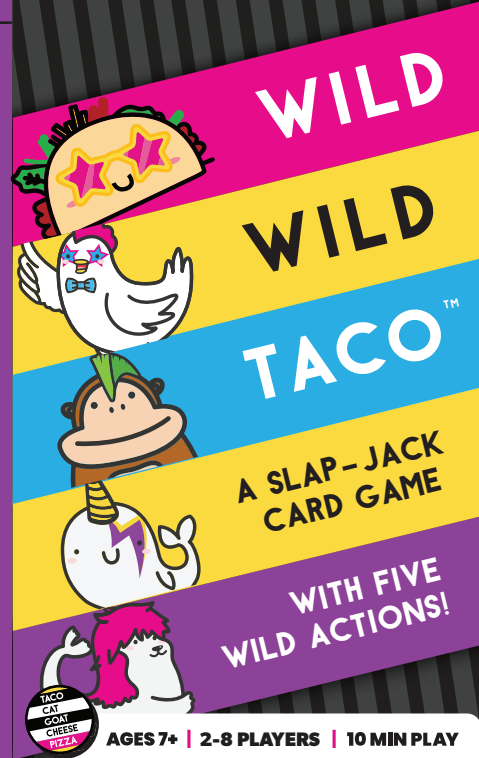
VISIT OUR WEBSITE:
DOLPHINHAT.COM

FOLLOW US ON SOCIAL MEDIA:
@DOLPHINHATGAMES



*Game involves physical contact.
Play at your own risk.

© 2024 Dolphin Hat Games LLC



WILD WILD TACO!

Video Instructions:



Scan for a
how-to-play video.

Contents: 61 Cards

Introduction:

Wild Wild Taco has more of all the specials you love from Taco Cat Goat Cheese Pizza! Special action cards from the original game plus NEW characters are combined with ALL-NEW rules. In this game, the Taco is wild while the specials are not...unless two are played in a row!

Players take turns flipping over their card while saying, "Wild, Wild, Taco." When a card played matches the one before it, everyone does the corresponding action and races to slap the pile. The first to get rid of all their cards wins!

Objective of the Game:

Get rid of all your cards.

Set Up:

Shuffle and deal out all cards, face down. Players must not look at their cards. The youngest player goes first.

Gameplay:

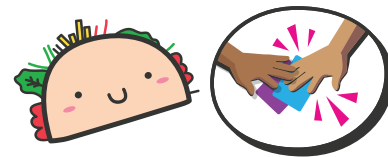
The first player flips over a card while saying "Wild!" Moving clockwise, the next player flips over a card while saying "Wild!" The next player flips over a card and says "Taco!"



Game play continues in this fashion until **one of the following happen:**

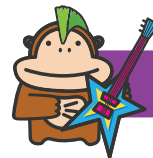
1. A Taco Card Is Played:

When a Taco card is played everyone races to slap the pile. The last person to slap the pile must take all the cards and place them on the bottom of their pile.



2. Two Special Cards Match:

If two matching special cards are played in a row, players must complete the action (see below list) and then slap the pile. The last person to slap the pile must take all the cards and place them on the bottom of their pile.



Gorilla:
Strum guitar

Narwhal: Make
horn above head

